



## 2018 Project Review Sheet (2019 Construction)

### City Council District 1

Ballot #1G

<b>Project #</b>	<b>18-167</b>
<b>Project Title:</b>	<b>Improvements on Fauntleroy Way SW &amp; SW Brandon St</b>
<b>Location:</b>	<b>Fauntleroy &amp; Brandon (Fauntleroy Playfield)</b>

### SDOT Project Summary

SDOT approves project

- Yes
- Yes, with revisions
- No

Comments: Design of a pedestrian crossing signal on the south leg of the intersection of Fauntleroy Way SW & SW Brandon St. Including additional traffic studies, signal warrant analysis, topographic survey, engineering design and cost estimating. YVYC funding is for design only, future grant applications would be needed to fund construction.

There is an opportunity to partner with another program:

- Yes
- No

Partnering Program: N/A

**Total Project Cost: \$72,600**



## Solution and Comments:

This review has been completed for use in the 2018 Your Voice, Your Choice: Parks & Streets process.

The YVYC funding is not sufficient to install a new pedestrian crossing signal at this location. However, traffic data at this location indicates that there are 58 pedestrians crossing Fauntleroy Way SW between 7:30 - 8:30am. This intersection provides a neighborhood connection to Fairmount Park and Fairmount Park Elementary school. Recommend that YVYC funding be used to conduct design the crossing improvements. Future grant applications would be needed to fund construction.

Requestor also asked for improvements along 35<sup>th</sup> Ave SW. Two new crossing signals are planned for 35<sup>th</sup> Ave SW through the Vision Zero and Neighborhood Greenways programs at SW Dawson St and SW Graham St respectively.

## Image:

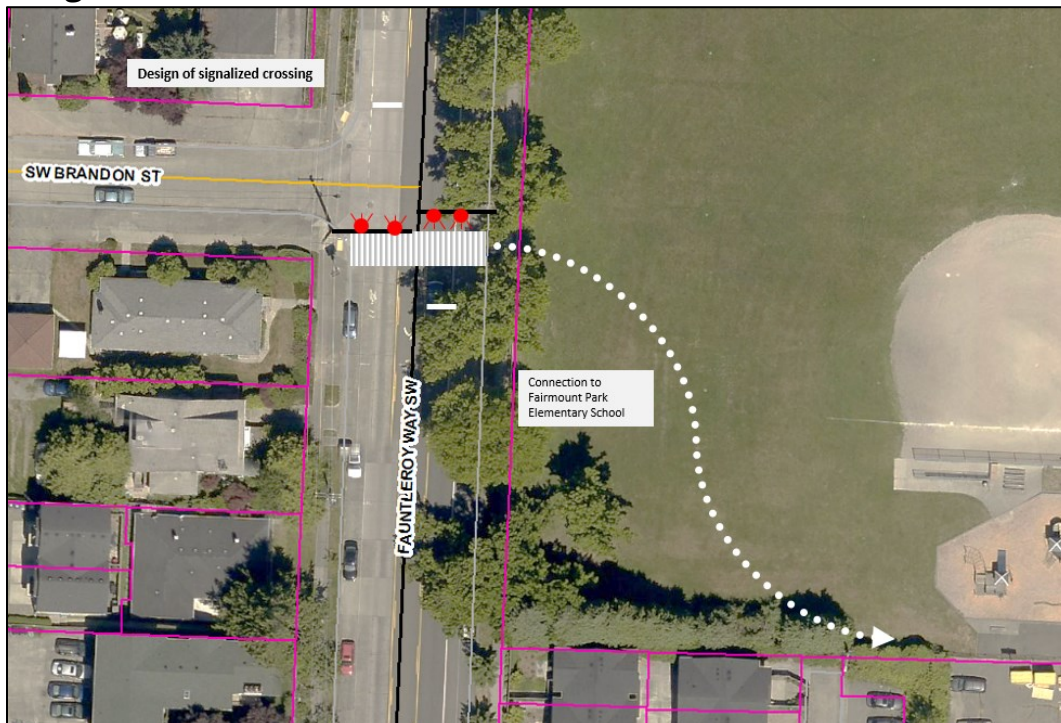


Figure 1: Proposed Design



---

## Information Provided by Community Members

**Project Idea:** More pedestrian triggered stop lights on 35th Ave SW, especially at Camp Long. Also need one on Fautleroy at the playfields north of Findlay.

**Need for Project:** Very dangerous for pedestrians going to the parks.

**Community Benefit from Project:** All people! Need stop lights not just flashing lights.



### Risk Registry:

SDOT Review	Drainage impacts	Constructability	Community process
Low - Design only concept uses standard treatments and has been vetted by Traffic Operations	Low - no likely drainage impacts with new infrastructure	High - no construction funding identified	Medium - new signalized crossing of arterial street

### Cost Estimate:

<b>Design Phase</b>	
Preliminary Engineering (Survey) Costs	\$ 10,000
Project Management Costs (City Labor)	\$ 6,000
Design Costs (Consultant Fees, if externally designed, internal labor otherwise) - use 10% of construction cost for in-house design of relative uncomplicated projects	\$ 50,000
<b>Subtotal - Design Phase Costs</b>	\$ 66,000
Design Contingency (10% of Design Phase Subtotal)	\$ 6,600
<b>Total Design Phase Costs</b>	\$ 72,600
<b>Construction Phase</b>	
Construction Costs (include urban forestry, signs & markings, traffic control, layout or construction staking as necessary)	\$ 0
Drainage Costs	\$ 0
Estimating Contingency (10-20%)	\$ 0
<b>Subtotal - Construction Costs</b>	\$ 0
Construction Management (10-25% of Construction Cost)	\$ 0
Construction Contingency (20%)	\$ 0
<b>Total Construction Phase Costs</b>	\$ 0
<b>Total Project Cost = Total Design and Construction Phase Costs</b>	\$ 72,600